

SELECTED WORKS  
LINE LYHNE

Line Lyhne's works employ various art historical references and thus formally resist a clear classification. Committed to both the craft of making and a conceptual framework, she includes different materials and methodologies, from hand crafting to the employment of readymades. Scrutinizing the boundaries between fine and applied arts she straddles the territories of historical fine art references and sociopolitical issues connected to questions of taste. Her works call attention to the space around them exploring hierarchies between architecture, object and body. By using forms and concepts inherited from art history she addresses issues of functionality, decoration, abstraction and feminism.



Installation view soloshow *Stretched out between the days*, WAF Galerie: Wiener Art Foundation. 2022-2023

relief: *Full of water that wanted to flow*, 2022, mixed tiles, aluminium frame.

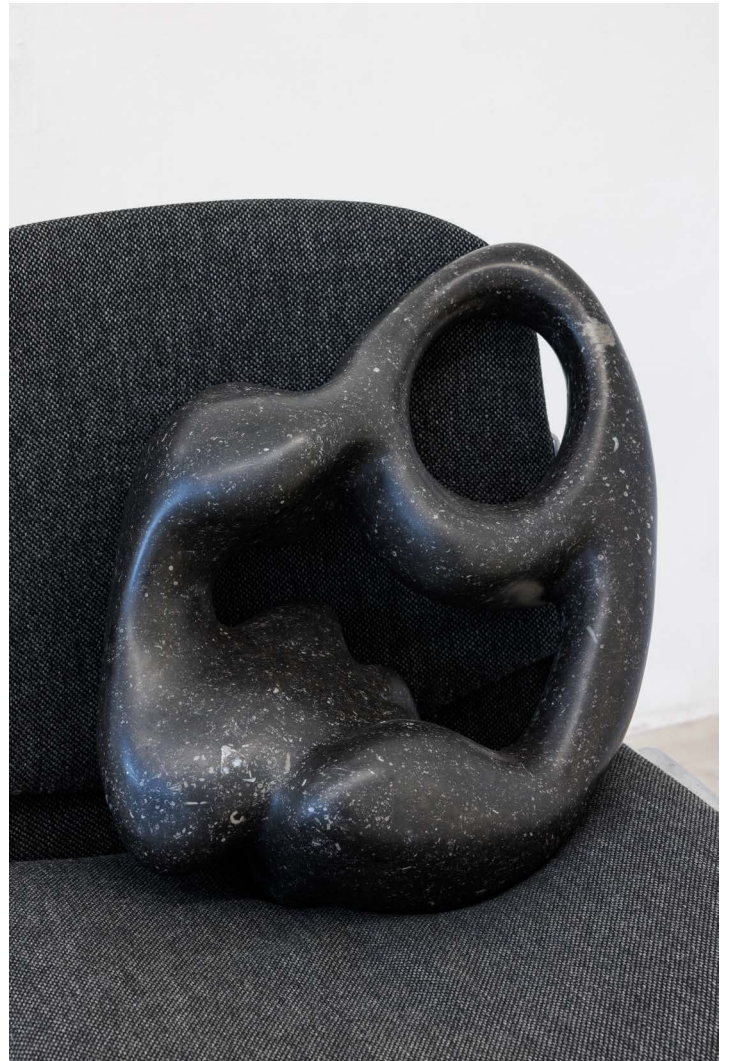
sculpture: *Stretched out between the days*, 2022, office chairs, mouthblown glass, bended steel.





*Stretched out between the days*, 2022, office chairs, mouthblown glass, bended steel.  
WAF Galerie: Wiener Art Foundation. 2022-2023





installation view soloshow *Stretched out between the days*, WAF Galerie: Wiener Art Foundation. 2022-2023  
sculptures: *Between the back and the belly*, 2022, office chairs, marble, basalt. / Relief: *Coming at things from all sides*, 2022





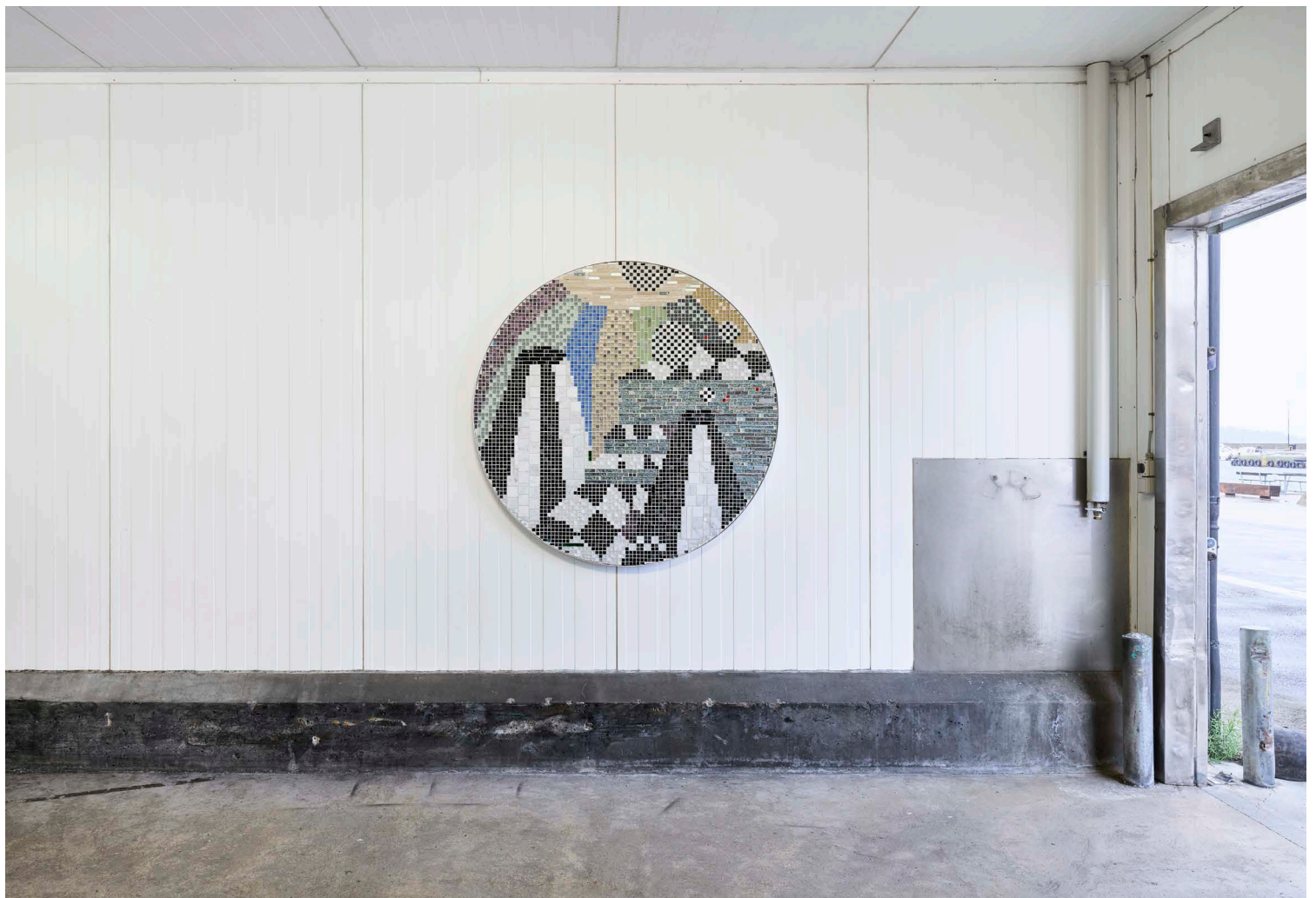
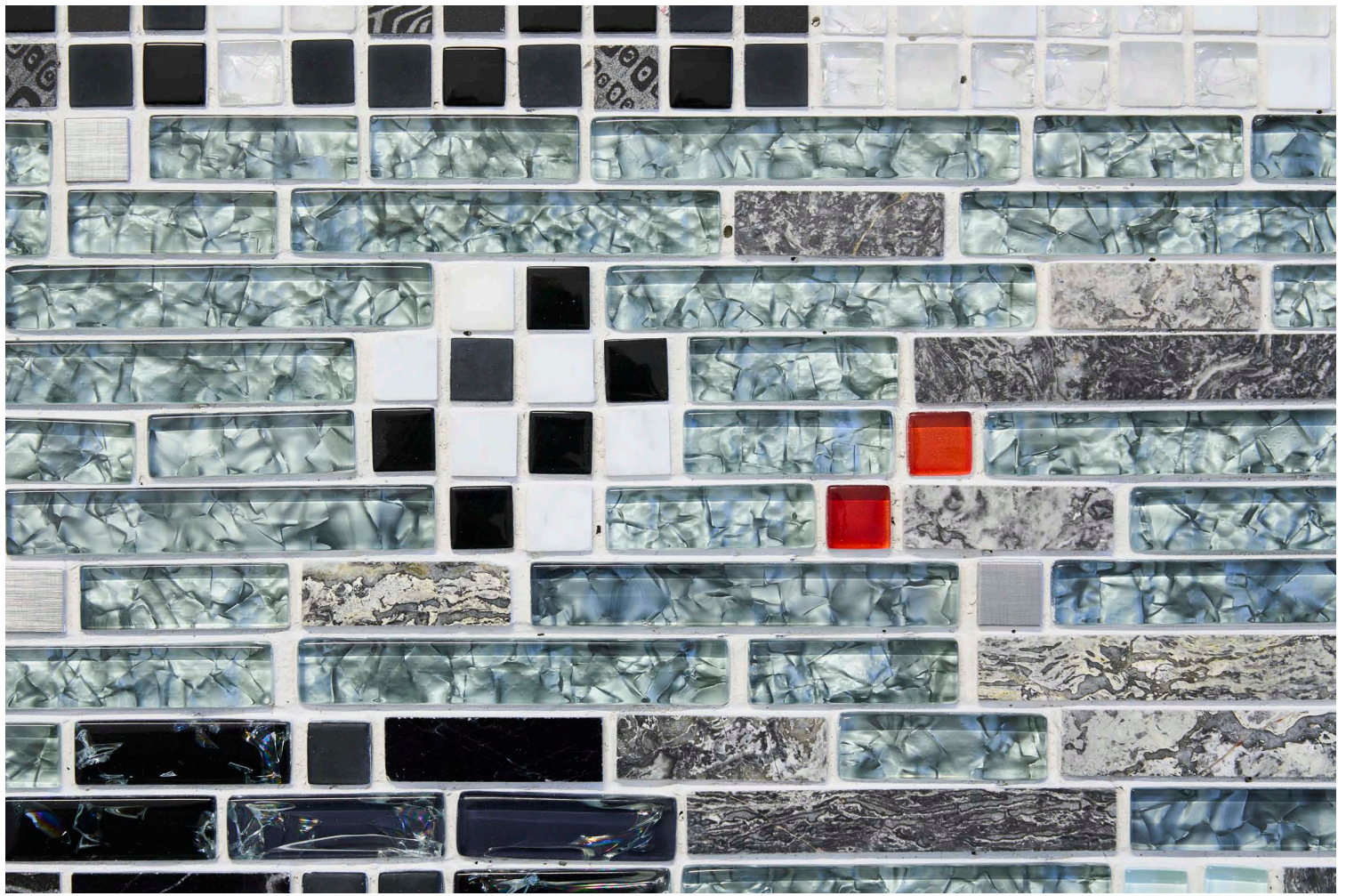
relief: *Toward a crackling mad sky*, 2022, mixed tiles, aluminium frame, *Rundgang Städelschule*





installation view soloshow *Mixed Feelings* at SOL Nexø, Bornholm. 2022  
sculpture: *Stretched out between the days*, 2022, office chairs, mouthblown glass, bended steel.





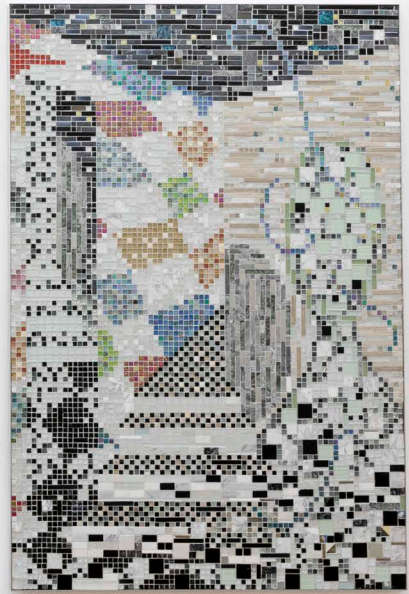
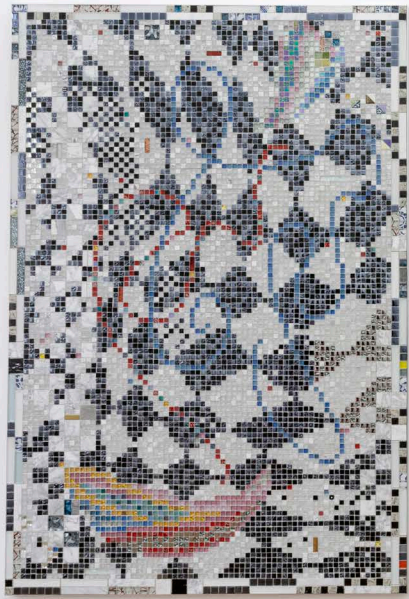
relief: *Going out through the top*, 2022, mixed tiles, aluminium frame.  
*Mixed Feelings* at SOL Nexø, Bornholm. 2022





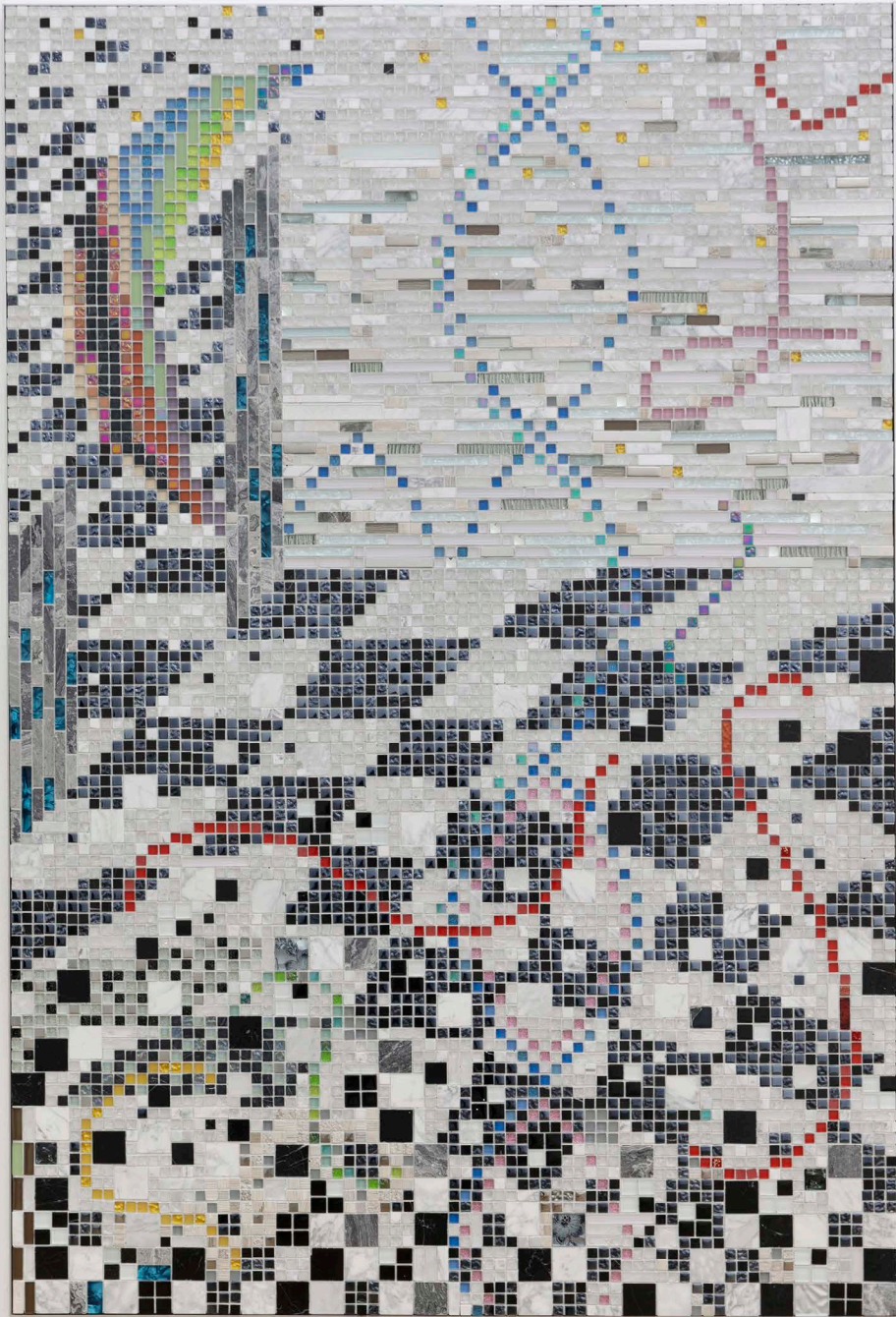
(detail), *Untitled*, 2022, pencil on paper & collage:





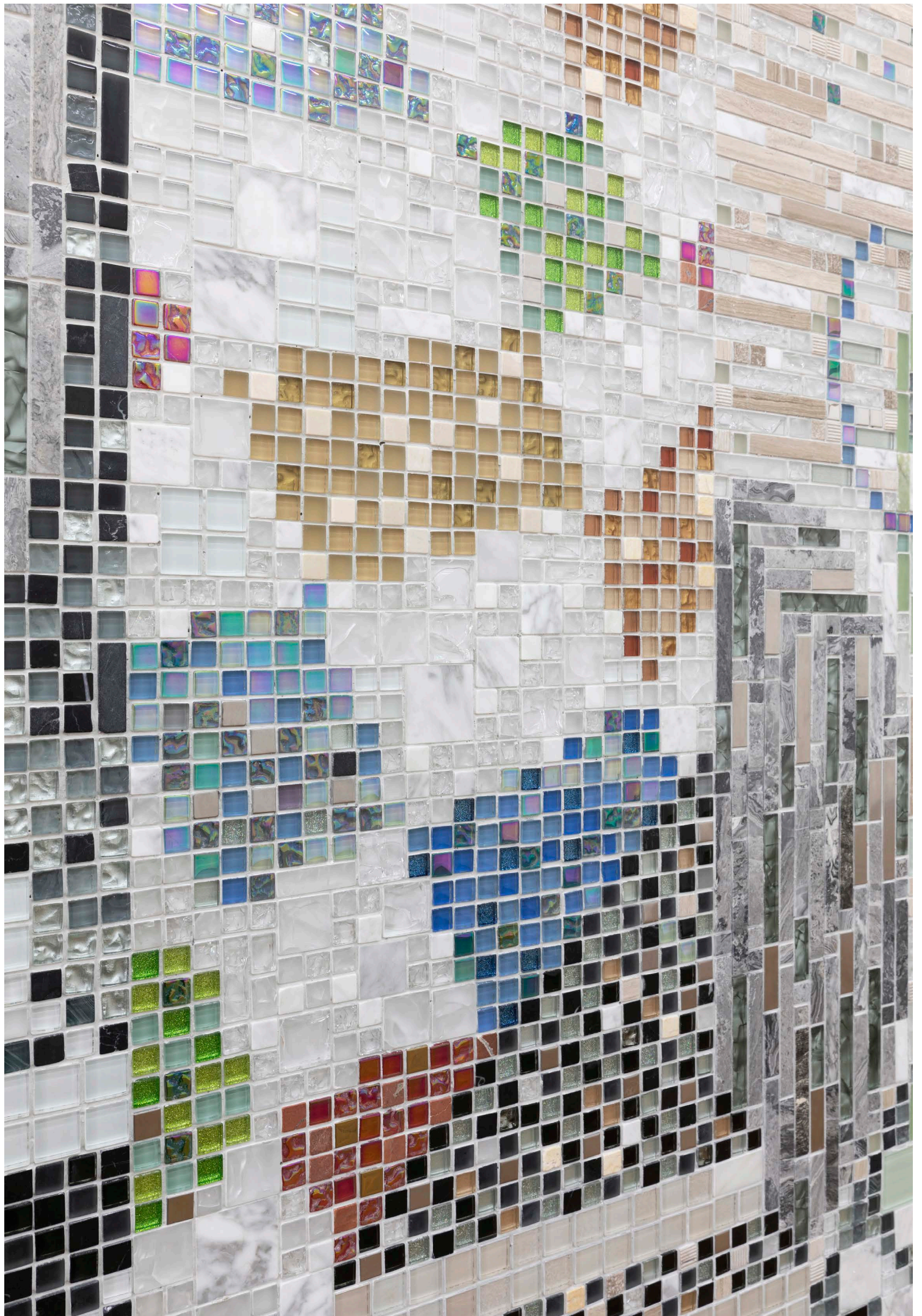
Installation view soloshow *Spaces and Species*, at Nassauischer Kunstverein Wiesbaden, 2021  
reliefs: (l) *I am in front yet I am inside*, 2021. / (r) *Hearing the house slip*, 2021, mixed tiles, aluminum frames.  
sculpture: *Silent servant*, 2021 marble and painted steel



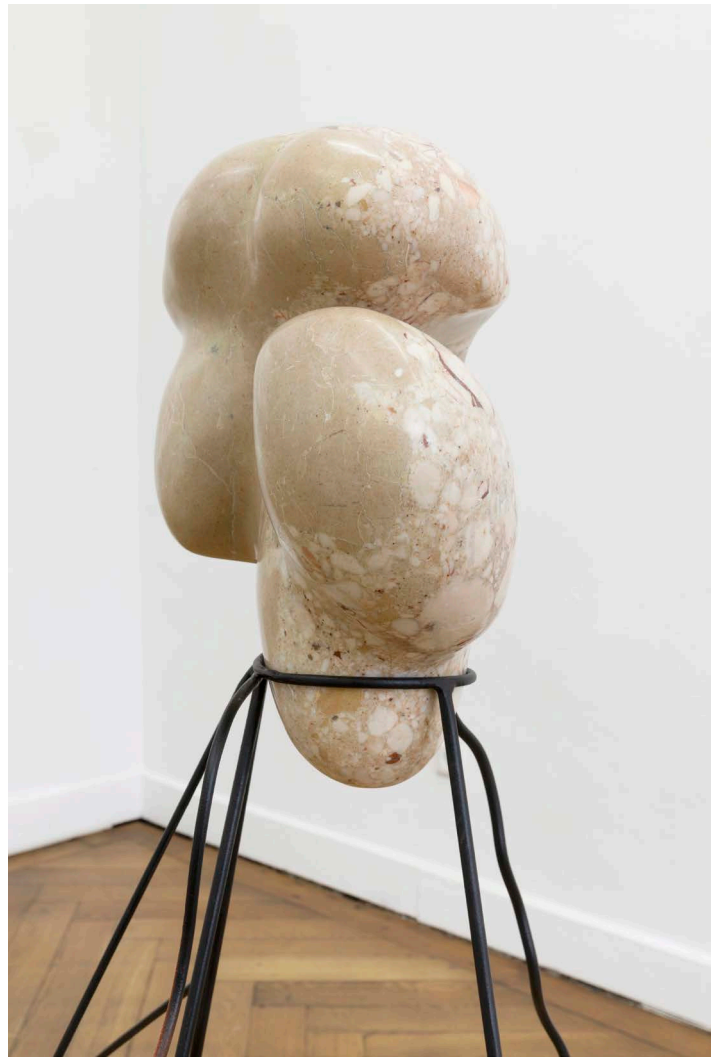


*This meltdown of space folds against our bellies*, 2021, mixed tiles, aluminum frames.  
*Spaces and Species*, at Nassauischer Kunstverein Wiesbaden, 2021



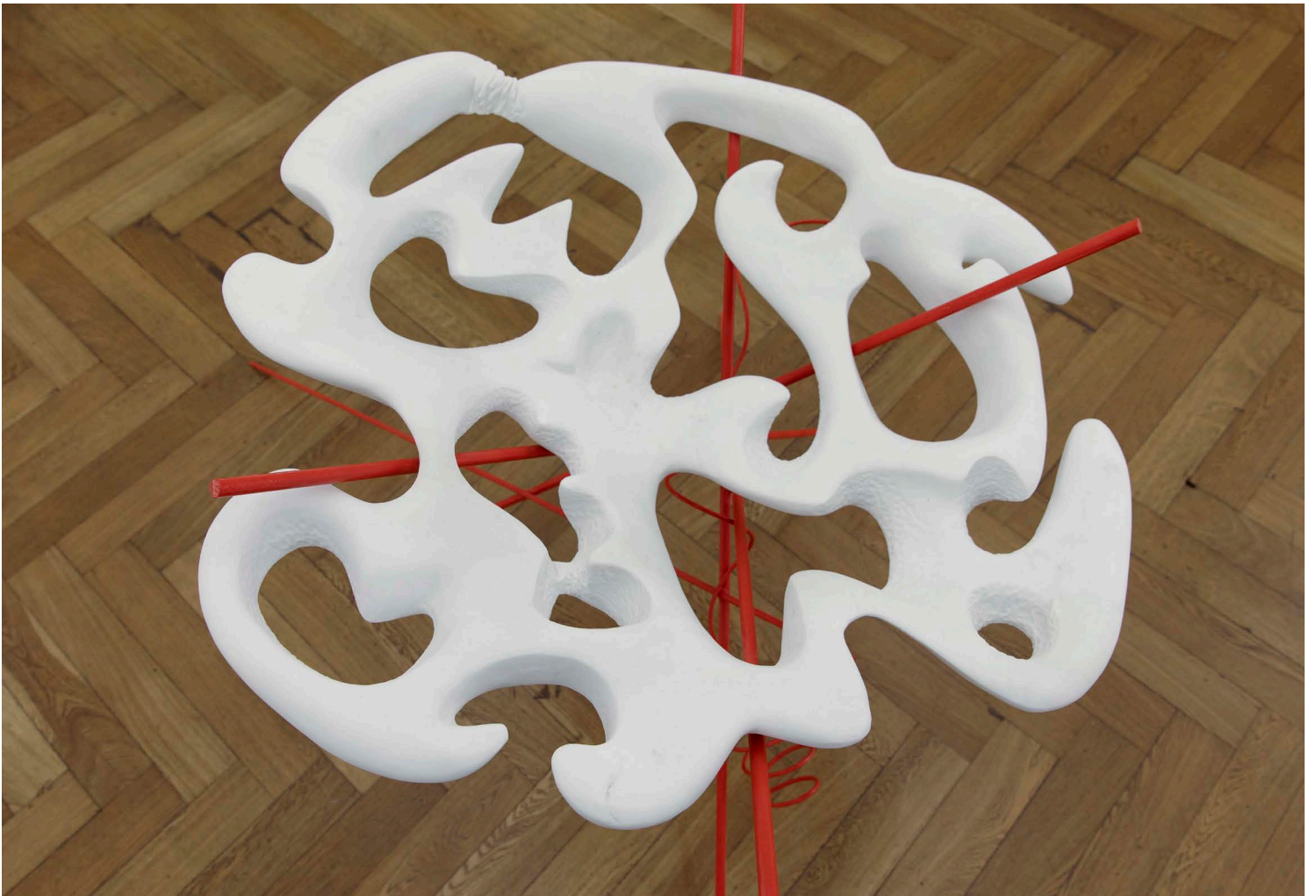






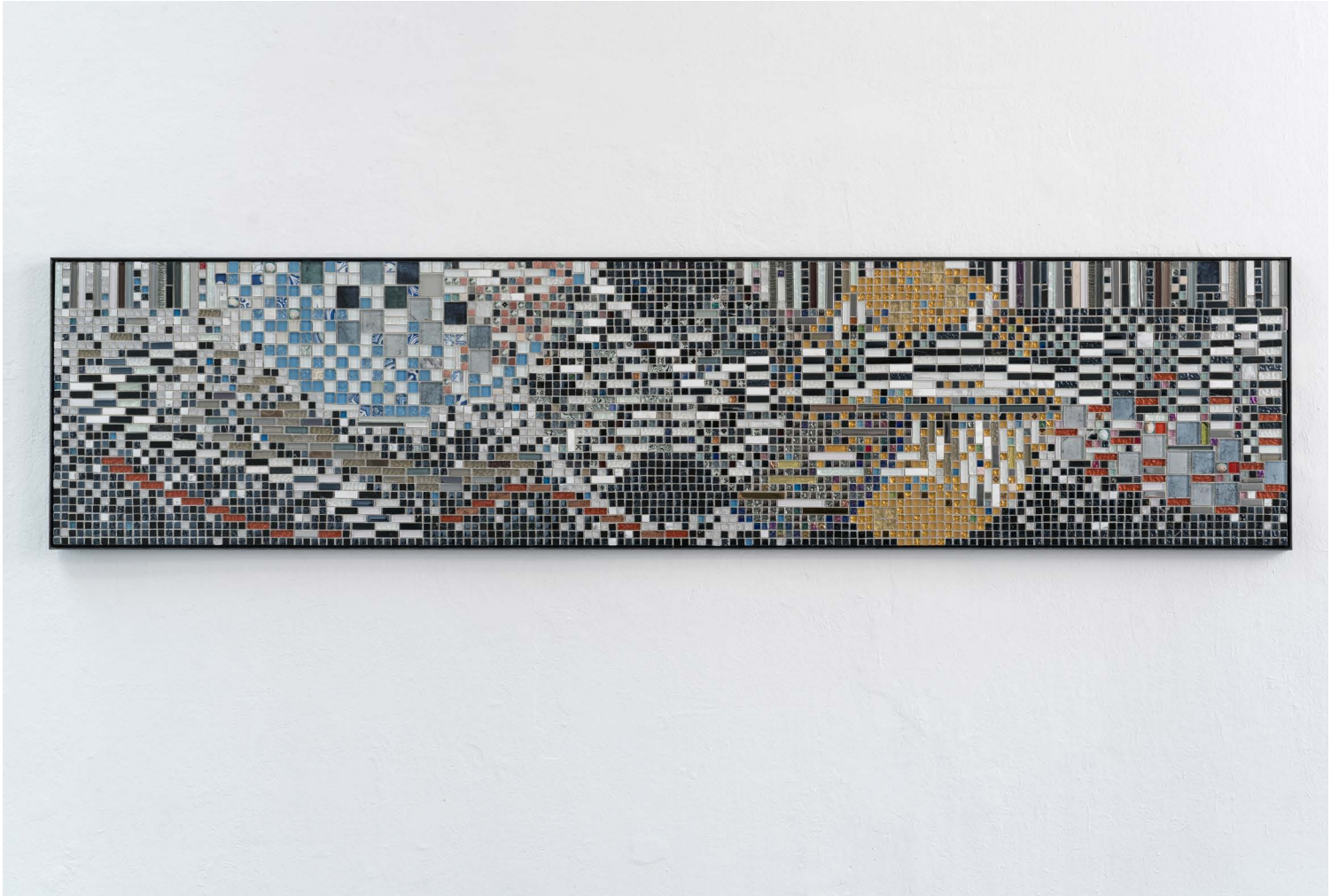
Installation view soloshow *Spaces and Species*, at Nassauischer Kunstverein Wiesbaden, 2021  
sculpture (detail): *Silent servant*, 2021 marble and painted steel  
sculptures: *Aphrodisiacs*, 2020 marble, painted steel. Relief (r): *Untitled*, 2021, lenticular postcard.





Installation view soloshow *Spaces and Species*, at Nassauischer Kunstverein Wiesbaden, 2021  
*Aphrodisiacs*, 2020 marble, painted steel.





installation view soloshow *Spaces and Species*, at Nassauischer Kunstverein Wiesbaden, 2021  
relief: *Sunset 2021*, mixed tiles, iron frame. / relief (r): *Untitled 2021*, lenticular postcard.





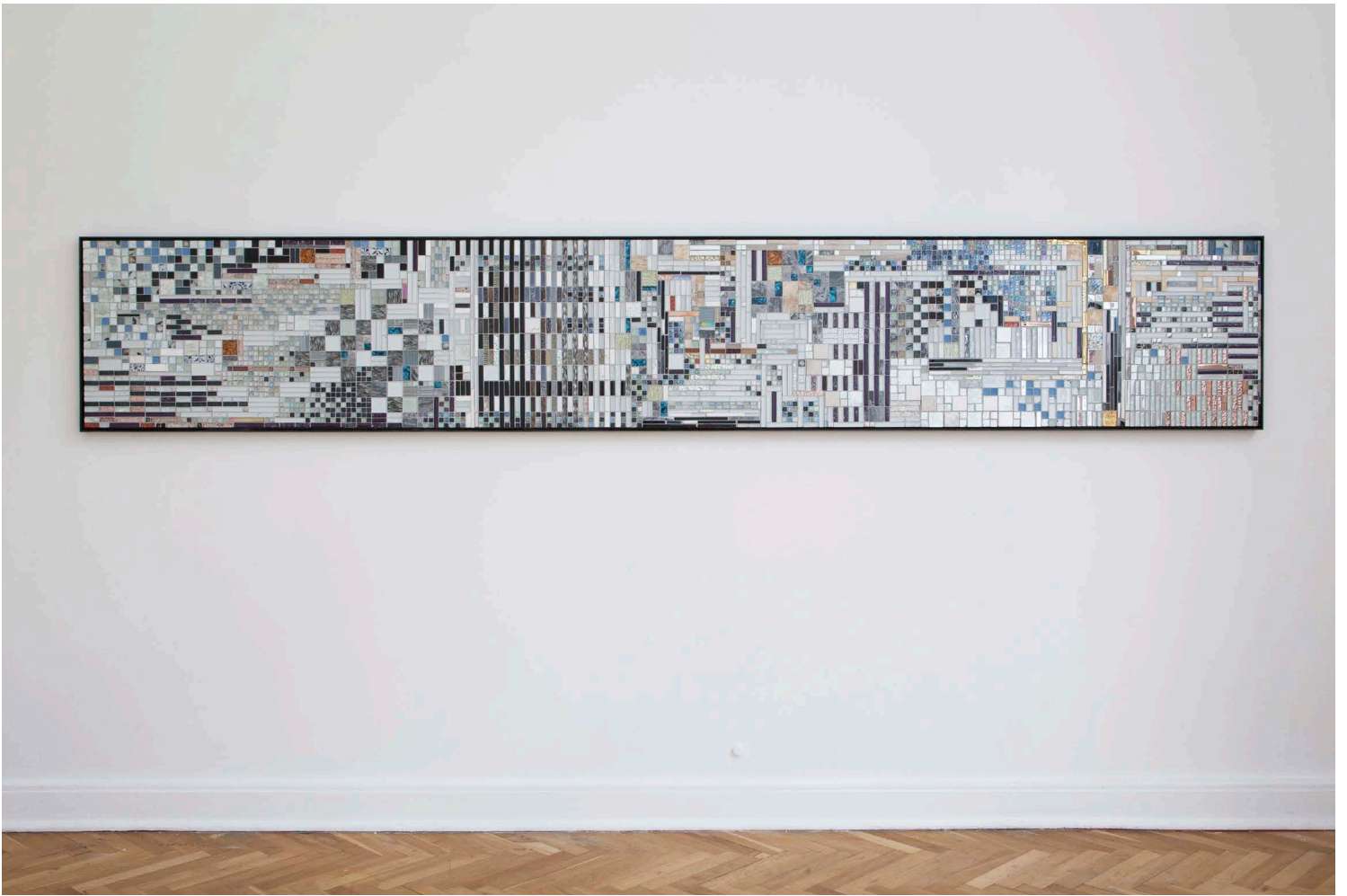
*Aphrodisiac*, Marble, Patchwork carpet, 2019 Exhibition view, Kunstverein Harburger Bahnhof.  
Collaborative installation *You can sit on it'* with HHintersection for Harburger Kunstverein with works by Marvin Moises Almaraz Dosal, Shira Lewis, Helene Padoux, Magnus Hvidtfeldt, Isamu Marsden, Gesa Troch, Yulia Wagner, Emma Wilson and Line Lyhne.



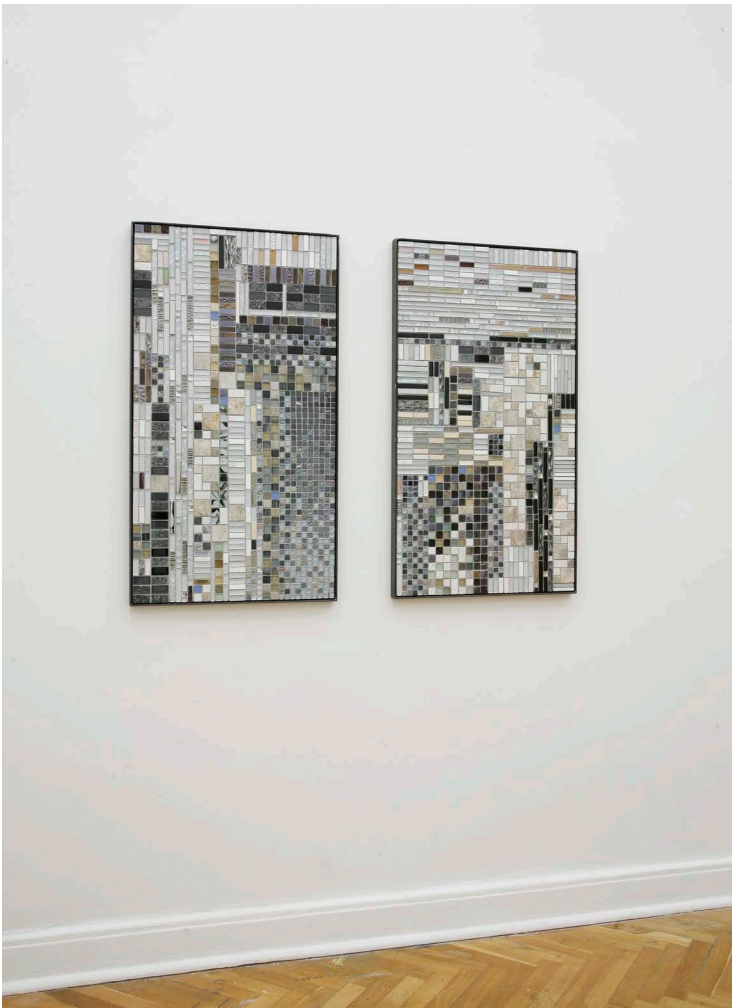


*Aphrodisiac*, Marble, Patchwork carpet, 2019 Exhibition view, Kunstverein Harburger Bahnhof.  
Collaborative installation *You can sit on it'* with HHintersection for Harburger Kunstverein with works by Marvin Moises Almaraz Dosal, Shira Lewis, Helene Padoux, Magnus Hvidtfeldt, Isamu Marsden, Gesa Troch, Yulia Wagner, Emma Wilson and Line Lyhne.

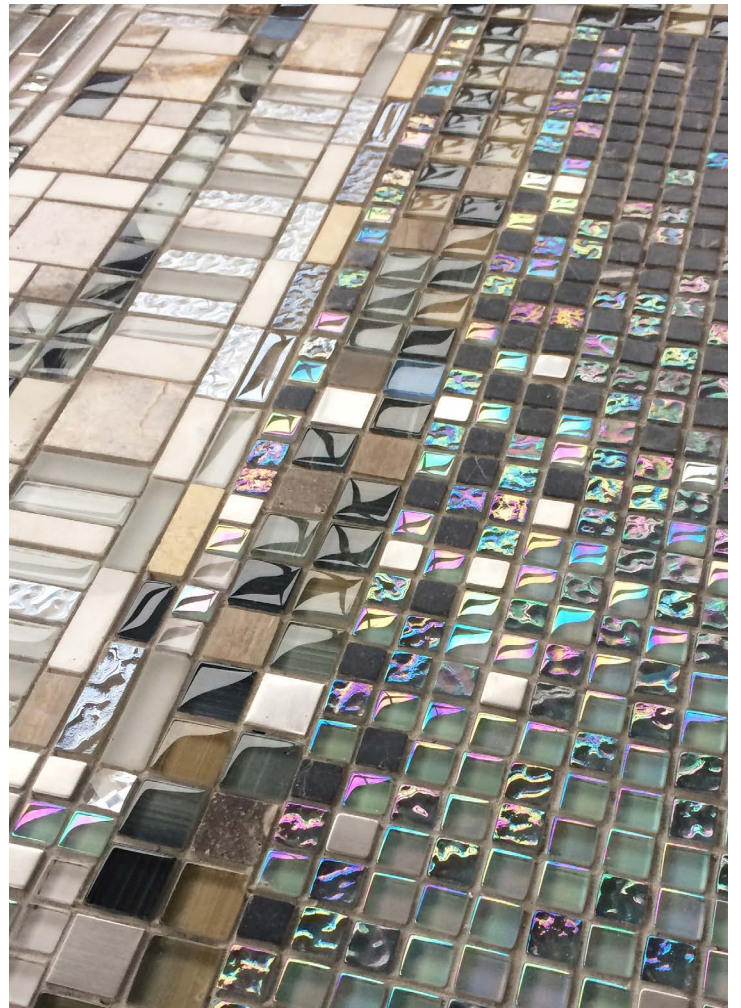




*Cry Me A River, 2019, Mixed tiles, metal frame.*



*Ambient Ambivalence, 2019, Mixed tiles, metal frame.*

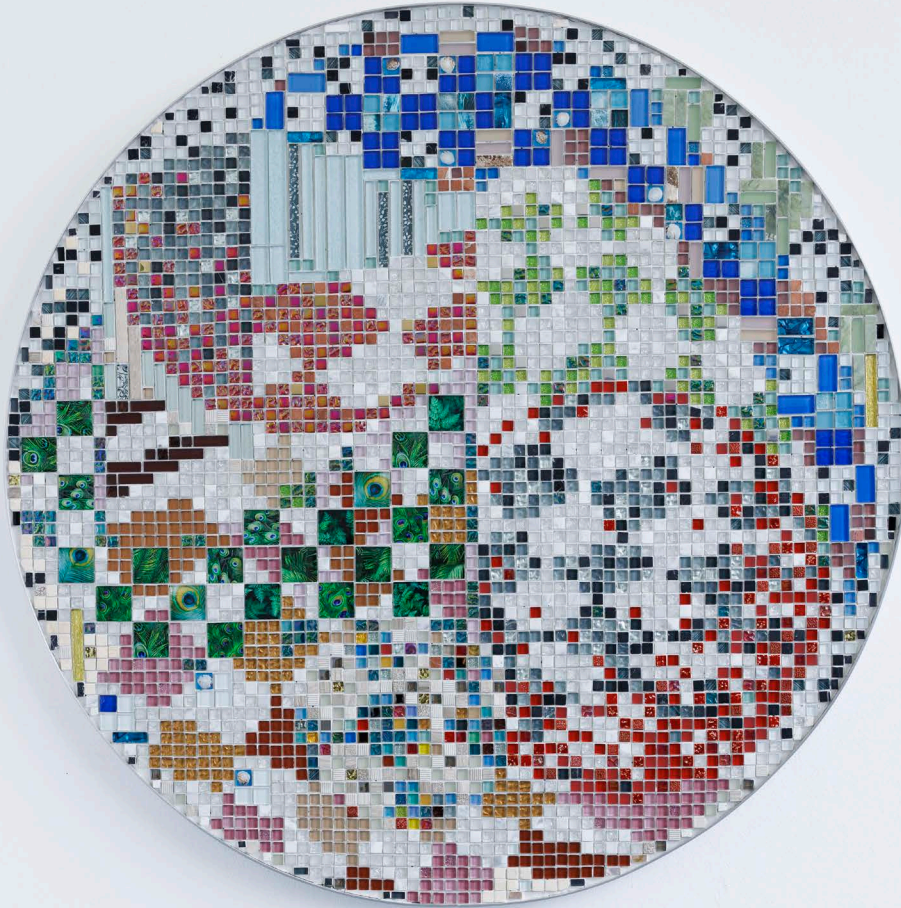






*Ornatment*, 2018, mixed gravel, crushed glass.  
Temporary installation at groupshow *Stoff Band Night*, at *Kunsthau Hamburg*





*Untitled, 2022, Mixed tiles, metal frame.  
Áplus Contemporary Art, Berlin*